



Guam COVID-19 Situation Report - 178

March 12–October 29, 2020

COVID-19 Cases
Primary Reported Residence

COVID-19 Case Count*	Total	Today	Past 7 days
COVID-19 Cases	4,549	83	487
Confirmed cases	4,504	72	461
Probable cases	45	11	26

*<https://www.cdc.gov/nndss/conditions/coronavirus-disease-2019-covid-19/case-definition/2020/08/05/> - CSTE/CDC COVID-19 case definition (August 5, 2020)

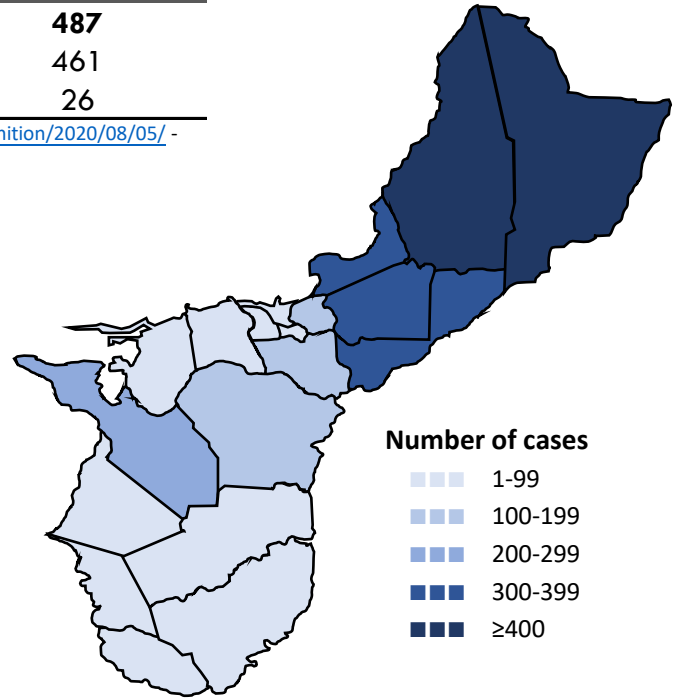
Summary

As of October 29, 2020, there have been 4,549 cases of COVID-19 reported on Guam. Eighty-three (83) new cases of COVID-19 were reported to DPHSS on October 28: 72 confirmed cases and 11 probable cases. Two COVID-19 cases were reported deceased since the last report: one on 10/28 and one on 10/29.

New confirmed cases reported today: 33 cases tested positive at GPLH, 16 tested positive at DLS, eight tested positive at AMC, eight tested positive at DoD, three tested positive at GMHA, three tested positive at GRMC, and one tested positive at Guam Radiology Consultants.

New probable cases reported today: eleven cases tested positive by antigen testing: nine at ExpressCare and two at IHP.

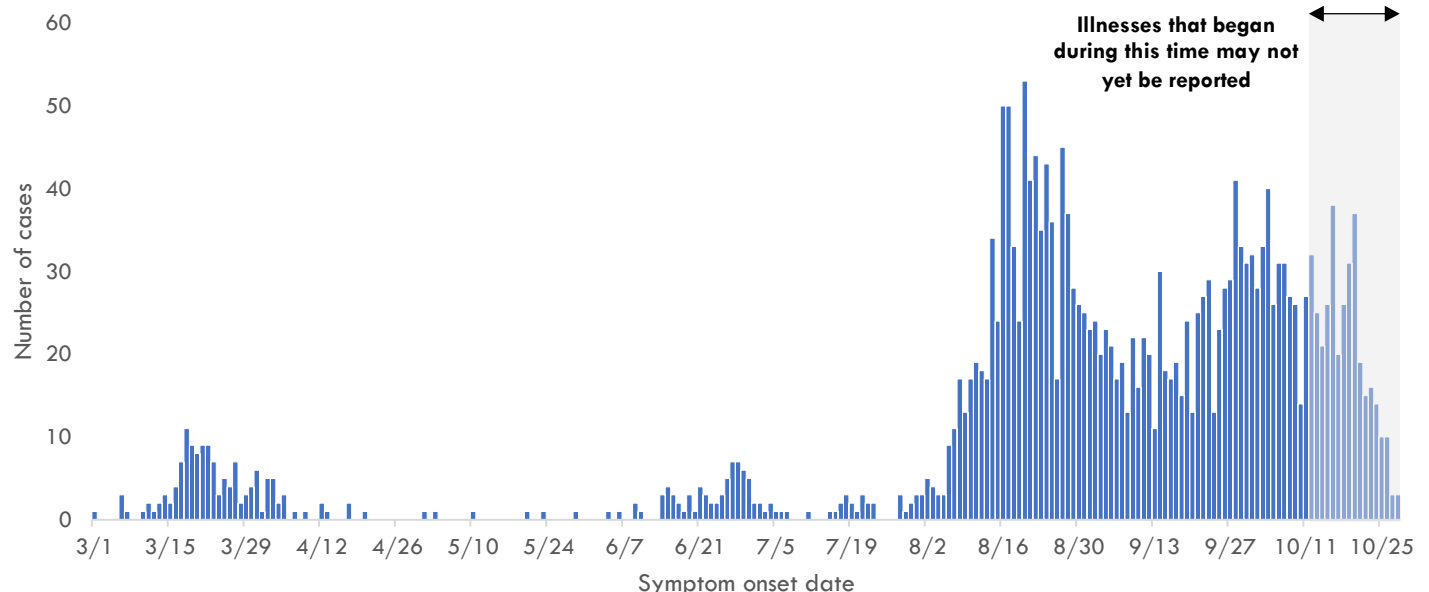
Twelve cases were identified through contact tracing. Two cases reported recent travel from the US and were identified in quarantine. Eighteen (18) cases were reported released from isolation.



COVID-19 Testing on Guam**	Total	New tests reported today	Percent positive
COVID-19 Tests	66,587	721	6.8%
Molecular Tests	65,981	626	6.8%
Antigen Tests	402	95	11.2%
Serology Tests	204	0	2.9%

**See COVID-19 Testing Breakdown for all testing definitions. New tests reported reflects the number of tests reported to DPHSS since the previous report and does not necessarily indicate the number of samples run in the same time frame. Negative antigen tests conducted by ExpressCare have not yet been reported to DPHSS.

COVID-19 cases by symptom onset date, Guam





Guam COVID-19 Situation Report - 18

March 12–October 29, 2020

Case Breakdown

Status	Sex	Current isolation location
COVID-19 deaths	Female	Hospital
Cases in active isolation†	Male	Home
Cases not in isolation§	Age Group	Isolation facility
Civilian	0-9	Military
Military service member	10-19	Epi-Link to COVID-19 case**
Travel History¶	20-29	Household contact
US	30-39	Community contact
Dubai	40-49	Workplace contact
Japan	50-59	Healthcare contact
Mexico	60-69	Residence
Philippines	70-79	North
Singapore	80-89	Central
Identified in quarantine	90+	South
		Homeless
		Non-resident

Note: Data for recent cases are preliminary and are updated based on findings from case investigations. Residence under investigation for 216 cases.

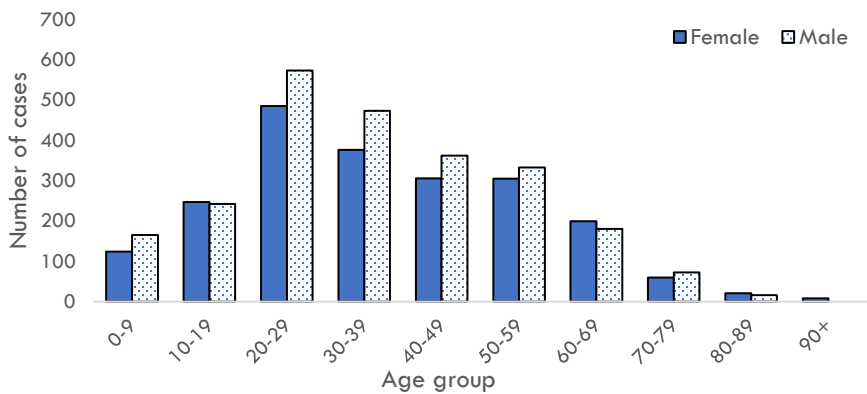
† Cases that test positive for COVID-19 through follow-up molecular testing return to active isolation.

§ Cases not in isolation indicates the number of COVID-19 cases that are no longer in active isolation based on criteria outlined on page 4. Generally, the criteria assess time since COVID-19 symptom resolution and the date of their most recent positive diagnostic test to qualify for release from isolation.

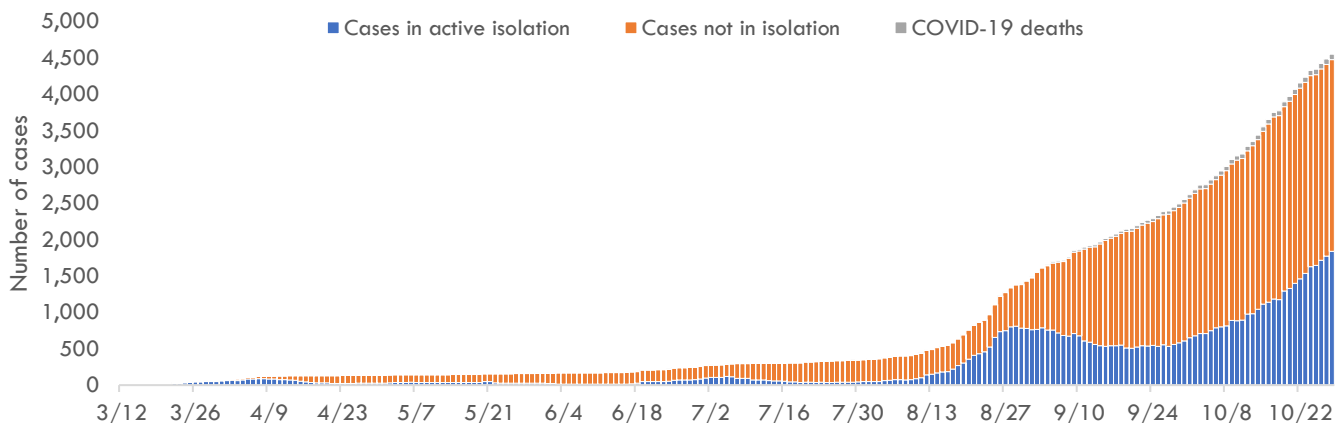
¶ In the 14 days before symptom onset. Some cases traveled to more than one country.

** Some cases have more than one link to other COVID-19 cases.

COVID-19 cases by age group and sex



Number of cases in active isolation, cases not in isolation, and COVID-19 deaths, Guam





Guam COVID-19 Situation Report - 178

March 12–October 29, 2020

COVID-19 TESTING BREAKDOWN

MOLECULAR TESTS	TOTAL	TOTAL POSITIVES*	NEW TESTS	NEW POSITIVES
Guam Public Health Laboratory	34,897	2,352	280	33
Diagnostic Laboratory Services	9,323	722	96	16
Department of Defense	8,428	545	69	8
Guam Memorial Hospital Authority	6,067	329	41	3
Guam Regional Medical City	4,316	241	84	3
Private Clinics**	2,933	313	56	9
Guam National Guard Laboratory	17	0	0	0
SEROLOGY TESTS	TOTAL	TOTAL POSITIVES	NEW TESTS	NEW POSITIVES
Diagnostic Laboratory Services	196	6	0	0
Department of Defense	8	0	0	0
ANTIGEN TESTS	TOTAL	TOTAL POSITIVES	NEW TESTS	NEW POSITIVES
Private Clinics***	402	45	95	11

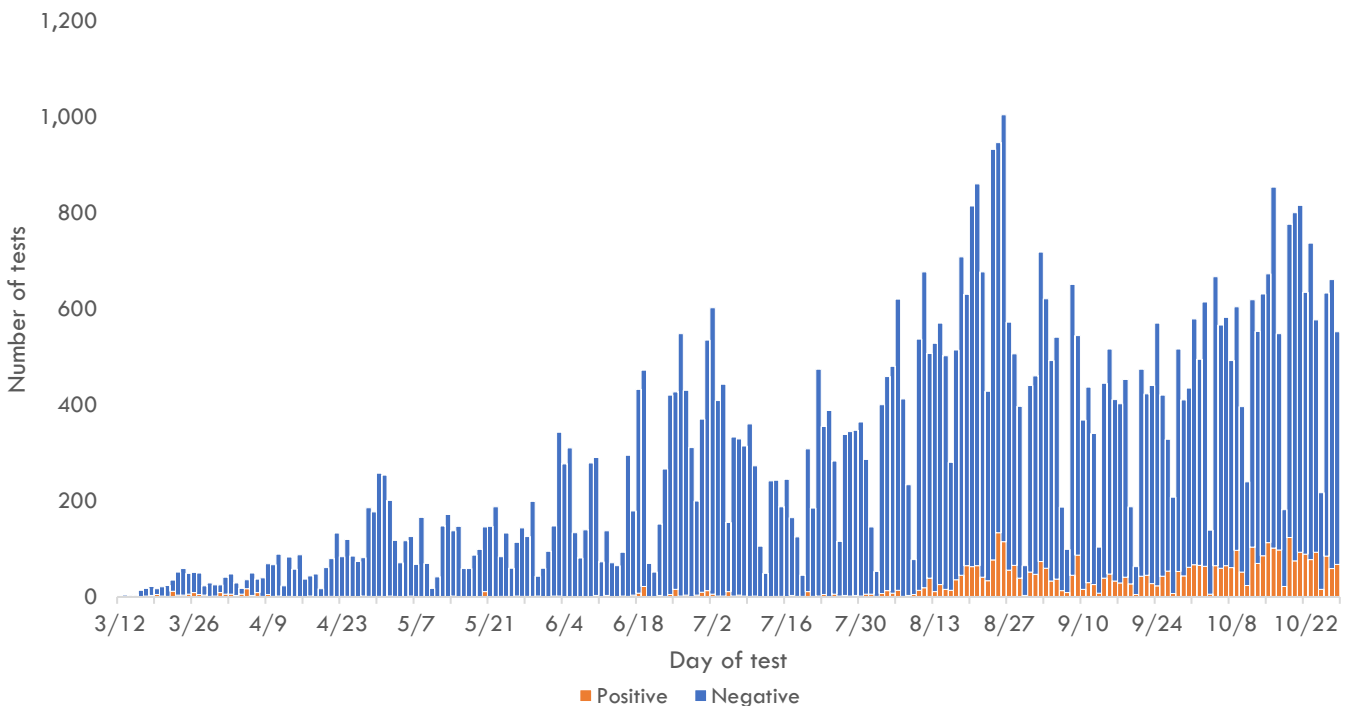
Total tests is defined as the number of tests with conclusive results not including follow-up testing for known COVID-19 cases. New tests reported today is defined as the total tests reported to DPHSS since the last Situation Report. Percent positive is defined as number of people with a positive test result, out of all people with COVID-19 testing. Total positives is defined as the number of people with a positive test result.

*Two additional confirmed cases tested positive through molecular testing at an out-of-state laboratory.

**Clinics included: American Medical Center, Guam Medical Care, Guam Radiology Consultants, and One Love Pediatrics.

***Clinics included: ExpressCare, IHP Medical Group and Guam Medical Care.

COVID-19 testing by day of test, Guam



CONTACT INVESTIGATIONS	TOTAL	10/28/20
Contacts identified by DPHSS	10,634	78
Contacts notified by DPHSS	4,941	100
Contacts tested by DPHSS	3,722	81
Cases identified through contact tracing	1,424	12

Note: Data for recent cases are preliminary and are updated based on findings from case investigations.

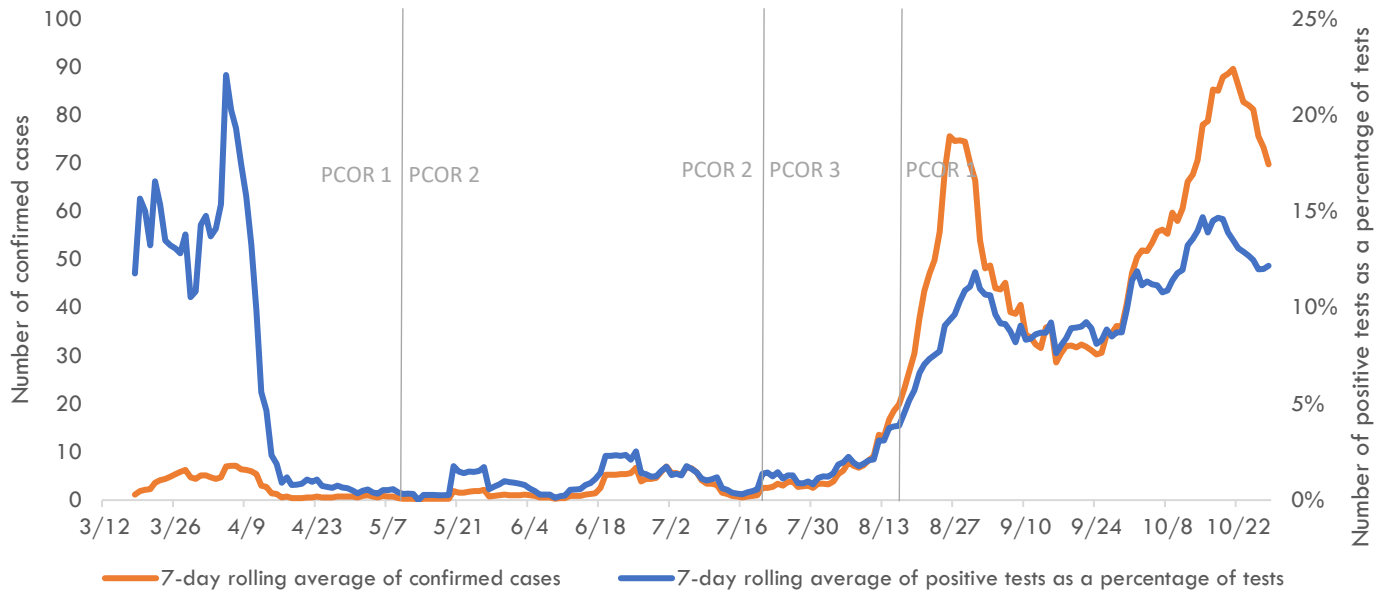


Guam COVID-19 Situation Report - 178

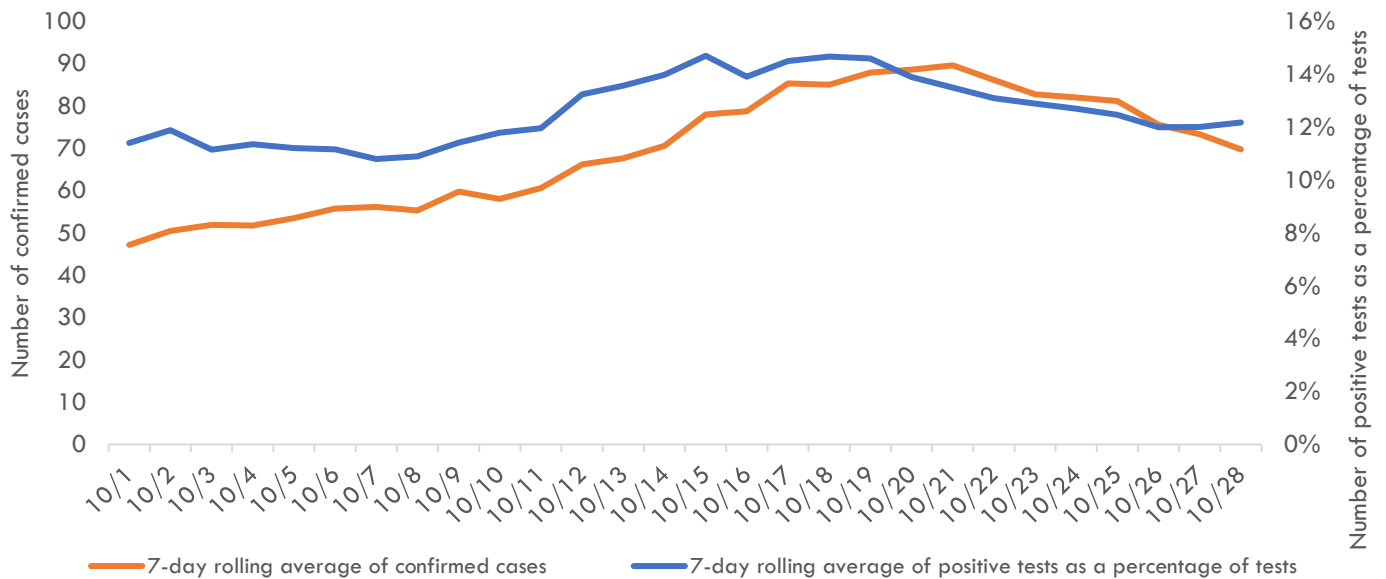
March 12–October 29, 2020

Pandemic Condition of Readiness Assessment

Triggers for PCOR - Cases, March 12–October 28, 2020



Triggers for PCOR - Cases, Previous 28 days



† Criteria for release from isolation

For persons with mild to moderate illness who are not severely immunocompromised:

For persons having symptoms: At least 3 days have passed since recovery defined as resolution of fever without the use of fever-reducing medications and improvement in respiratory symptoms (e.g., cough, shortness of breath) and any other symptoms attributed to COVID-19 AND at least 10 days have passed since symptoms first appeared—or since recurrent symptoms appeared—AND at least 10 days have passed since the date of their first (or most recent) positive COVID-19 diagnostic test.

For persons without symptoms: At least 10 days have passed since the date of their first (or most recent) positive COVID-19 diagnostic test assuming they have not subsequently developed symptoms since their positive test.

For persons with severe to critical illness or who are severely immunocompromised:

For persons having symptoms: At least 10 days have passed since symptoms first appeared, up to 20 days.

For persons without symptoms: At least 10 days have passed since the date of their first positive COVID-19 diagnostic test, up to 20 days.